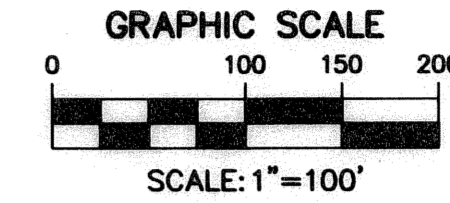
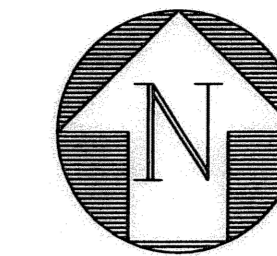


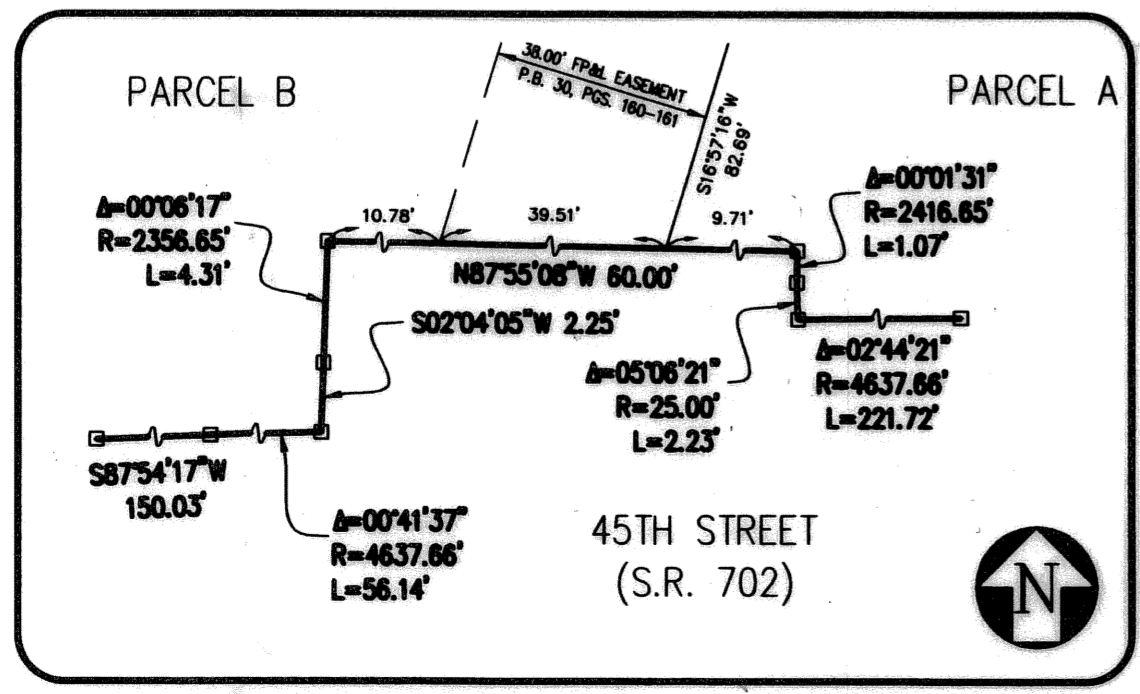
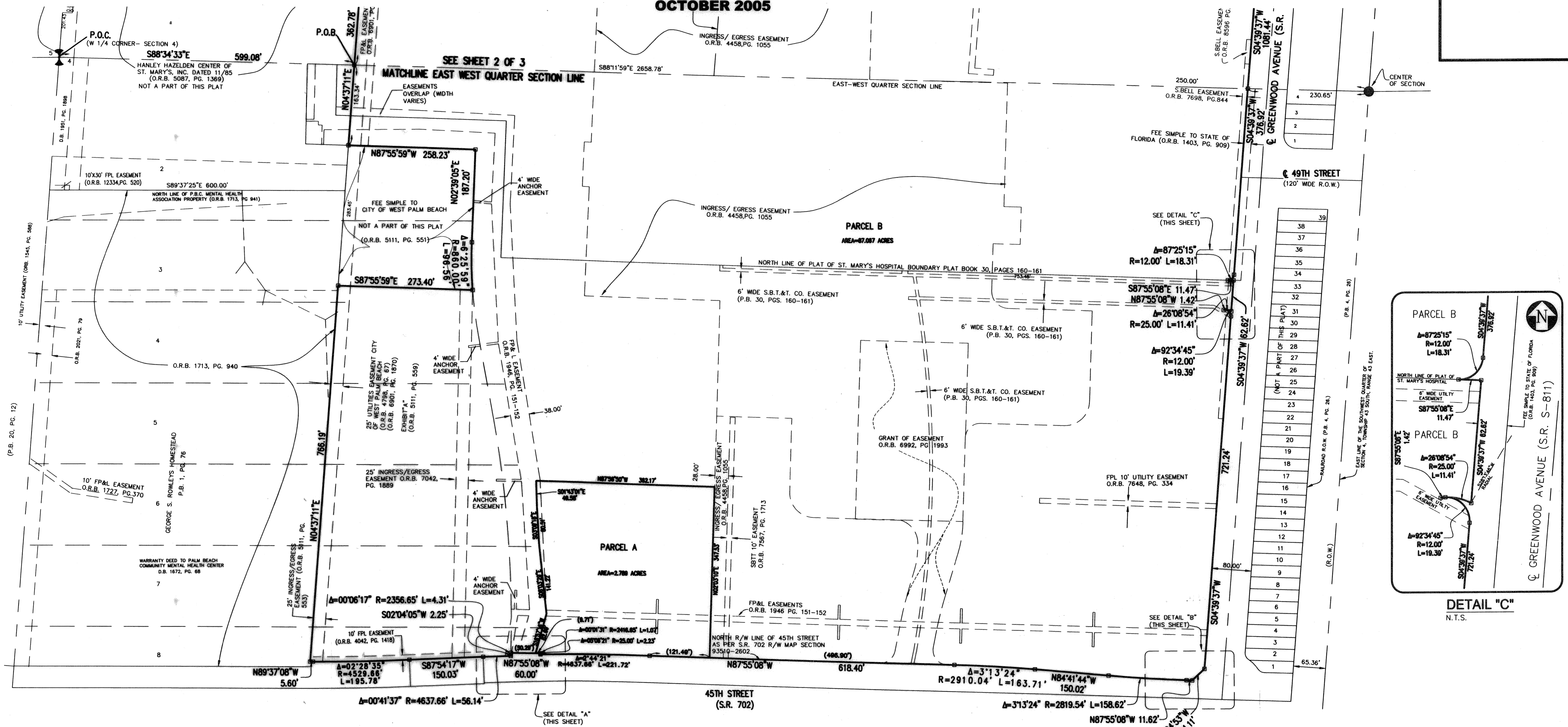
# TENET ST. MARY'S

Being a replat of Boundary Plat Saint Mary's Hospital as recorded in Plat Book 30, Pages 160 & 161, the Plat of George S. Rowleys Homestead as recorded in Plat Book 1, Page 76, and the Plat of St. Mary's Nursing Home as recorded in Plat Book 18, Page 54, all of the Public Records of Palm Beach County, Florida, together with portions of Section 4, Township 43 South, Range 43 East, City of West Palm Beach, Palm Beach County, Florida.

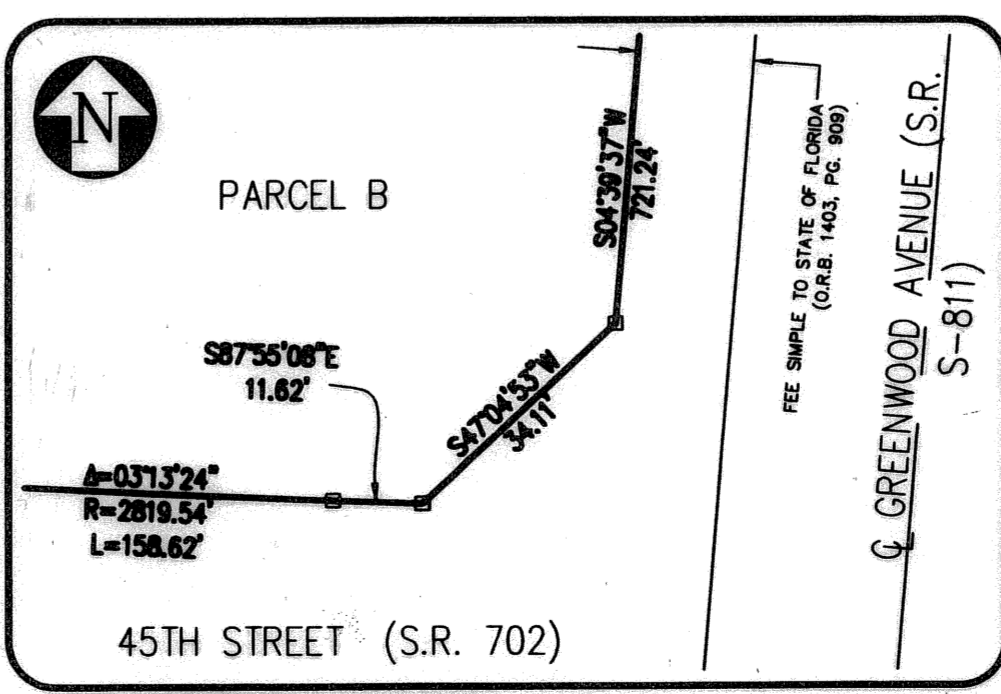
SHEET 3 OF 3  
OCTOBER 2005



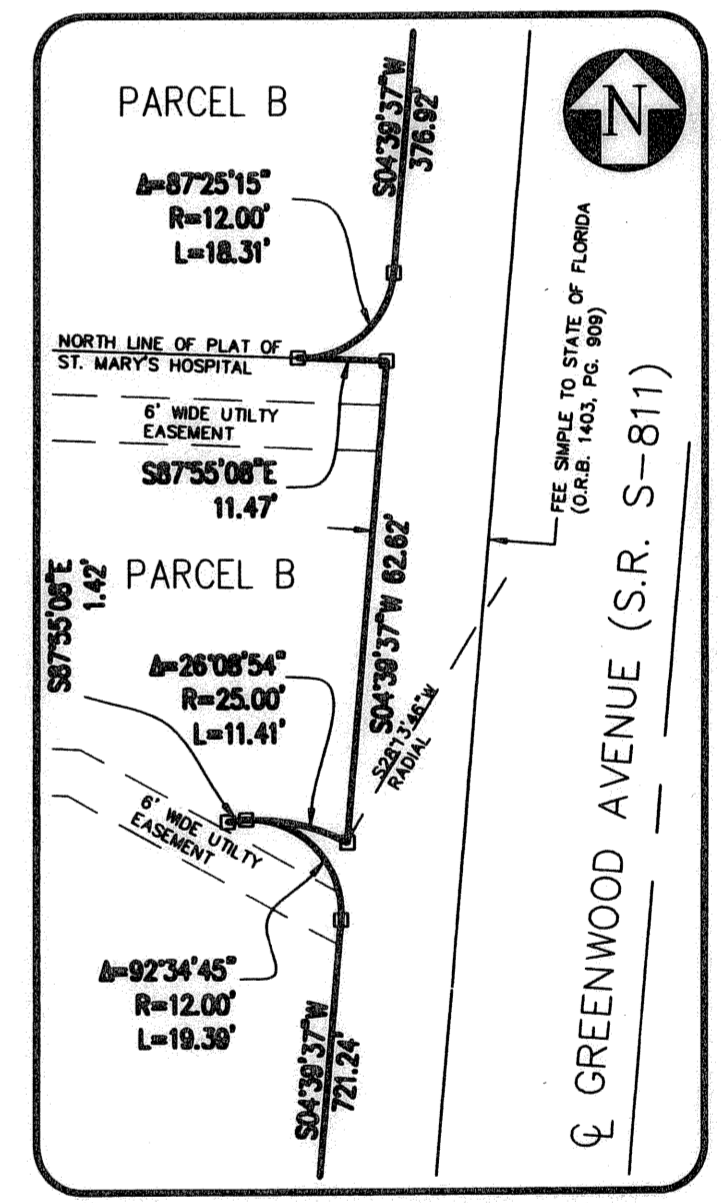
167



DETAIL "A"  
N.T.S.



DETAIL "B"  
N.T.S.



DETAIL "C"  
N.T.S.

THIS INSTRUMENT PREPARED BY ANDRE' RAYMAN, P.S.M. #LS4938 STATE OF FLORIDA.  
SFRN, INC., ENGINEERS, SURVEYORS & MAPPERS  
1201 BELVEDERE ROAD, WEST PALM BEACH, FLORIDA 33405.  
CERTIFICATE OF AUTHORIZATION NO. LB0006803

## TENET ST. MARY'S

Engineers • Surveyors • Mappers

DATE	02/13/2005
SCALE	1" = 50'
CAD FILE	98523MPLAT.dwg
PROJECT	9852307
DRAWN	SFRN STAFF
CHECKED	G. RAYMAN

S  
H  
E  
E  
T

# 3/3

JOB NO.  
**98523.03**

V:\Land Projects\9852307.dwg\98523.MPLAT.dwg 11/10/2005 2:35:10 PM EST